



*Renaissance
Optimal
Portfolios*

*Designed for tomorrow's
investment realities
and opportunities*

What are the Renaissance Optimal Portfolios?

The Renaissance Optimal Portfolios provide investors with the opportunity to **generate income, manage volatility** and benefit from **capital appreciation**. These portfolios offer access to a broad range of investment opportunities through a mix of top funds from Renaissance Investments.



The key pillars of the Optimal Portfolios



Income generation

Access a consistent stream of income across various macroeconomic environments.



Volatility management

Mitigate the adverse impact of market volatility.



Capital growth

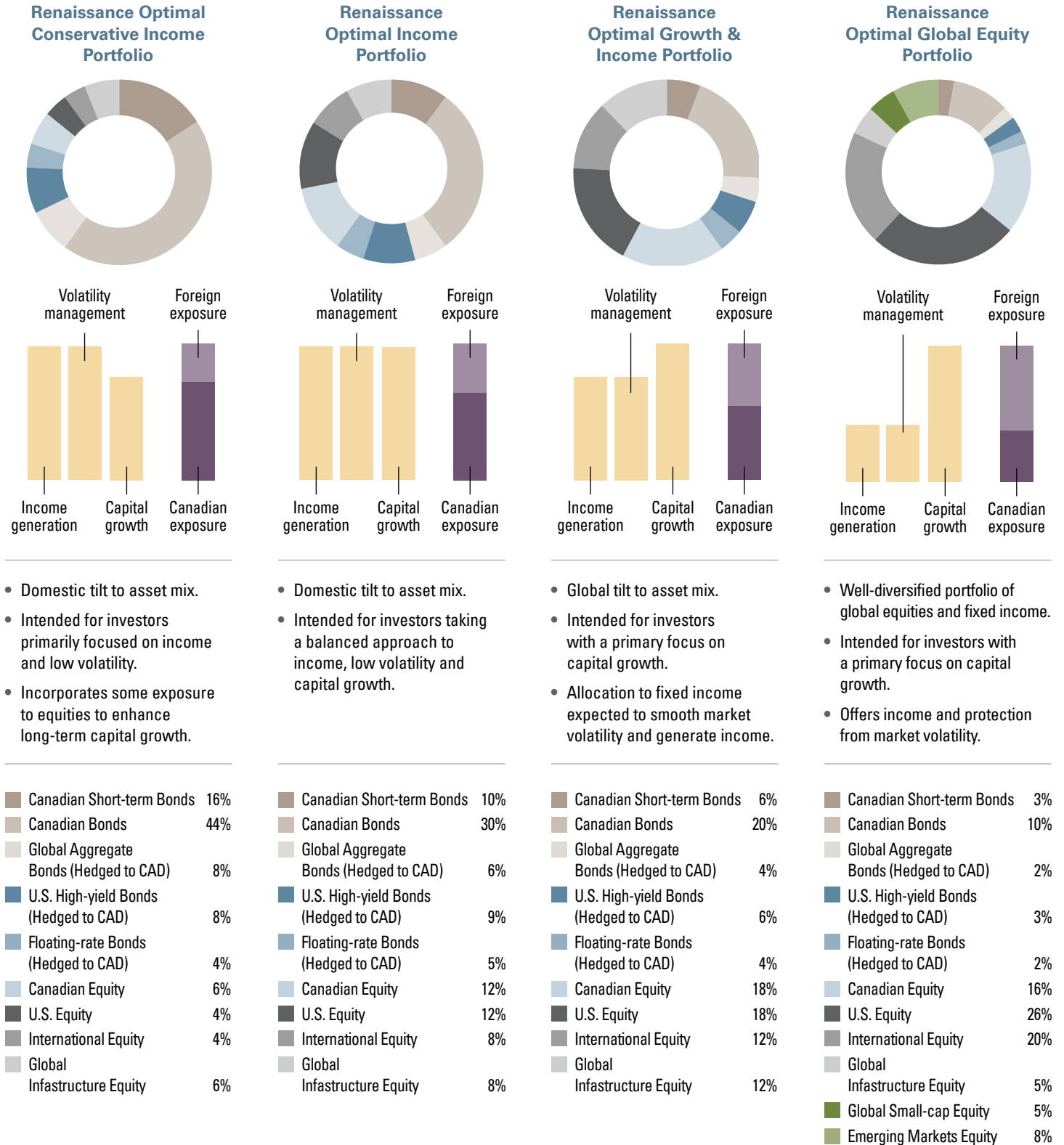
Provide an important source of long-term capital growth potential.

How we bring these pillars to life

- **Strategic oversight:** The portfolios are built using a disciplined strategic asset allocation process, with a focus on: investor objectives, expected long-term returns and risks, robust portfolio construction, and regular monitoring and review.
- **Tactical tilting:** When it makes sense, we adjust the portfolios to capture the impact of shorter-term market dislocations and trends, within the context of our long-term view.
- **Investment breadth and diversification:** The portfolios are diversified across and within asset classes, leveraging investment managers from around the globe.

The Optimal Portfolios are all-in-one core solutions designed for tomorrow's investment realities and opportunities

The Renaissance Optimal Portfolios are core investment solutions that fit most investor profiles, whatever the risk tolerance or return and income needs. The portfolios also offer access to multiple asset classes.



- Domestic tilt to asset mix.
- Intended for investors primarily focused on income and low volatility.
- Incorporates some exposure to equities to enhance long-term capital growth.

- Domestic tilt to asset mix.
- Intended for investors taking a balanced approach to income, low volatility and capital growth.

- Global tilt to asset mix.
- Intended for investors with a primary focus on capital growth.
- Allocation to fixed income expected to smooth market volatility and generate income.

- Well-diversified portfolio of global equities and fixed income.
- Intended for investors with a primary focus on capital growth.
- Offers income and protection from market volatility.

Portfolio enhancer

The Renaissance Optimal Inflation Opportunities Portfolio uses active asset allocation to benefit from changing economic cycles around the world. The portfolio's holdings are adjusted to address inflation concerns and capitalize on opportunities.

1 Protects against domestic inflation

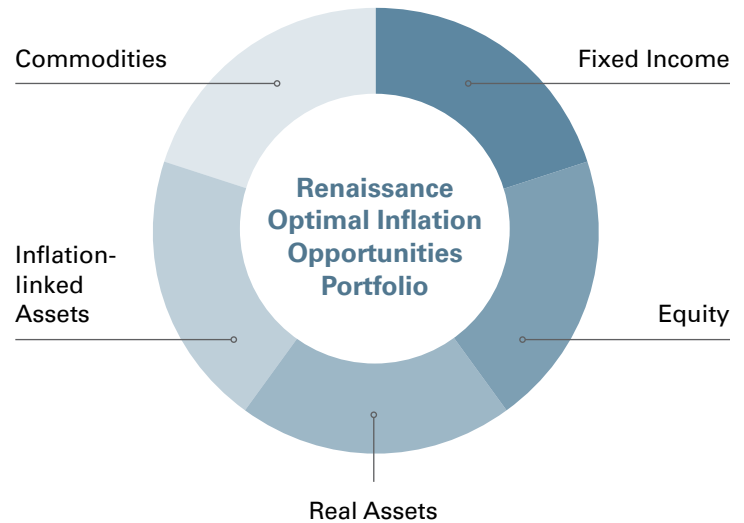
Employs a mix of inflation-hedging assets like infrastructure, real estate and real return bonds.

2 Capitalizes on inflation opportunities around the world

Uses an active asset allocation strategy to capitalize on changing inflationary environments.

3 Complements a balanced portfolio

Enhances diversification through a blend of traditional and non-traditional asset classes.



Strategic oversight, led by our specialists

The CIBC Asset Management Multi-Asset and Currency Management team brings together a broad group of investment specialists. Leading the team is Luc de la Durantaye, CFA, Vice Chairman. The team's investment processes combine rigorous quantitative models with robust fundamental judgment.



CIBC ASSET MANAGEMENT



Benefit from global expertise

CIBC Asset Management partners with global investment managers to deliver a broad range of forward-looking, client-focused solutions. The Renaissance Optimal Portfolios benefit from a variety of best-in-class portfolio managers.



WALTER SCOTT



WELLINGTON
MANAGEMENT®

Access a broad range of investment opportunities

The Renaissance Optimal Portfolios are composed of a diverse mix of top Renaissance Investments mutual funds. They are designed to generate income, benefit from capital appreciation and manage volatility.

Strategic Asset Allocation (Strategic fund weights are as at December 12, 2023)

	Tactical range ¹	Renaissance Optimal Conservative Income Portfolio	Renaissance Optimal Income Portfolio	Renaissance Optimal Growth & Income Portfolio	Renaissance Optimal Global Equity Portfolio
Fixed Income					
Canadian Short-Term Fixed Income Renaissance Short-Term Income Fund	Plus or minus 10%	16%	10%	6%	3%
Canadian Fixed Income Renaissance Canadian Bond Fund	Plus or minus 10%	44%	30%	20%	10%
Global Fixed Income Renaissance Global Bond Private Pool	Plus or minus 5%	8%	6%	4%	2%
High-Yield Renaissance High-Yield Bond Fund	Plus or minus 5%	8%	9%	6%	3%
Floating-Rate Bond Renaissance Floating Rate Income Fund	Plus or minus 5%	4%	5%	4%	2%
Real Return Bond Renaissance Real Return Bond Fund*	Plus or minus 5%	–	–	–	–
Equity					
Canadian Equity Renaissance Canadian Dividend Fund	Plus or minus 5%	6%	12%	10%	8%
Canadian Equity Renaissance Canadian Growth Fund	Plus or minus 5%	n/a	n/a	8%	8%
U.S. Equity Renaissance U.S. Equity Income Fund	Plus or minus 5%	4%	6%	6%	8%
U.S. Equity Renaissance U.S. Equity Growth Fund	Plus or minus 5%	n/a	6%	12%	18%
International Equity Renaissance International Dividend Fund	Plus or minus 5%	4%	4%	6%	8%
International Equity Renaissance International Equity Fund	Plus or minus 5%	n/a	4%	6%	12%
Global Infrastructure Renaissance Global Infrastructure Fund	Plus or minus 5%	6%	8%	12%	5%
Global Small-cap Equity Renaissance Global Small-Cap Fund	Plus or minus 5%	n/a	n/a	n/a	5%
Emerging Markets Equity Renaissance Emerging Markets Fund	Plus or minus 5%	n/a	n/a	n/a	8%

¹ Tactical ranges may vary in the future and are provided here as an indication of the current tactical strategy for the Renaissance Optimal Portfolios.

Portfolio details

Portfolio Details	Renaissance Optimal Conservative Income Portfolio	Renaissance Optimal Income Portfolio	Renaissance Optimal Growth & Income Portfolio	Renaissance Optimal Global Equity Portfolio	Renaissance Optimal Inflation Opportunities Portfolio
Risk Rating	Low	Low	Low to medium	Medium	Low to medium
Minimum Purchase	\$500	\$500	\$500	\$500	\$500
Class F	ATL2913	ATL051	ATL2942	ATL1652	ATL2455
Class FT4	ATL1034	–	ATL1036	ATL1343	–
Class FT6	ATL1035	ATL1038	ATL1037	ATL1344	–
Class A FEL	ATL2910	ATL048	ATL2939	ATL1902	ATL2452
Class A LL	ATL2911	ATL049	ATL2940	ATL2903	ATL2453
Class A BEL	ATL2912	ATL050	ATL2941	ATL1903	ATL2454
Class T4 FEL	ATL2915	–	ATL2944	ATL2425	–
Class T4 LL	ATL2916	–	ATL2945	ATL2426	–
Class T4 BEL	ATL2917	–	ATL2946	ATL2427	–
Class T6 FEL	ATL2918	ATL053	ATL2947	ATL2428	–
Class T6 LL	ATL2919	ATL054	ATL2948	ATL2429	–
Class T6 BEL	ATL2920	ATL055	ATL2949	ATL2430	–
Class F MER	0.80%	0.84%	0.93%	1.06%	0.97%
Class A MER	1.63%	1.96%	2.02%	2.15%	2.21%

To learn more about the Renaissance Optimal Portfolios,
please speak with your financial professional

1 888 888 FUND (3863)

renaissanceinvestments.ca

*On March 22, 2024, CIBC Asset Management Inc. announced its intention to terminate the Fund on or about August 16, 2024. Effective March 22, 2024, units of the Fund are no longer available for new purchases.

The MERs have been annualized as at August 31, 2023 as disclosed in the Renaissance Investments Annual Management Reports of Fund Performance. The Manager waived some management fees and/or absorbed some operating expenses, which reduced the MERs. Please refer to the Annual / Interim (whichever applies) Management Reports of Fund Performance for restated MERs, which reflect what the MERs would have been if the Manager had not waived some management fees and/or absorbed operating expenses. The decision to waive management fees and/or absorb operating expenses is reviewed annually and determined at the discretion of the Manager; this practice may continue indefinitely or can be terminated at any time.

Renaissance Investments is offered by CIBC Asset Management Inc. This document is provided for informational purposes only and is not intended to provide financial, investment, tax, legal or accounting advice, and should not be relied upon in that regard or be considered predictive of any future market performance. Any information or discussion about the current characteristics of this fund or how the portfolio manager is managing the fund that is supplementary to information in the prospectus is not a discussion about material investment objectives or strategies, but solely a discussion of the current characteristics or manner of fulfilling the investment objectives and strategies, and is subject to change without notice. You should not act or rely on the information without seeking the advice of a professional. Commissions, trailing commissions, management fees and expenses all may be associated with mutual fund investments. Please read the simplified prospectus before investing. To obtain a copy of the Renaissance Investments family of funds simplified prospectus, call 1-888-888-FUND (3863). Alternatively, you may obtain a copy from your advisor. Mutual funds are not guaranteed, their values change frequently and past performance may not be repeated.

®Renaissance Investments is a registered trademark of CIBC Asset Management Inc.

The material and/or its contents may not be reproduced without the express written consent of CIBC Asset Management Inc.